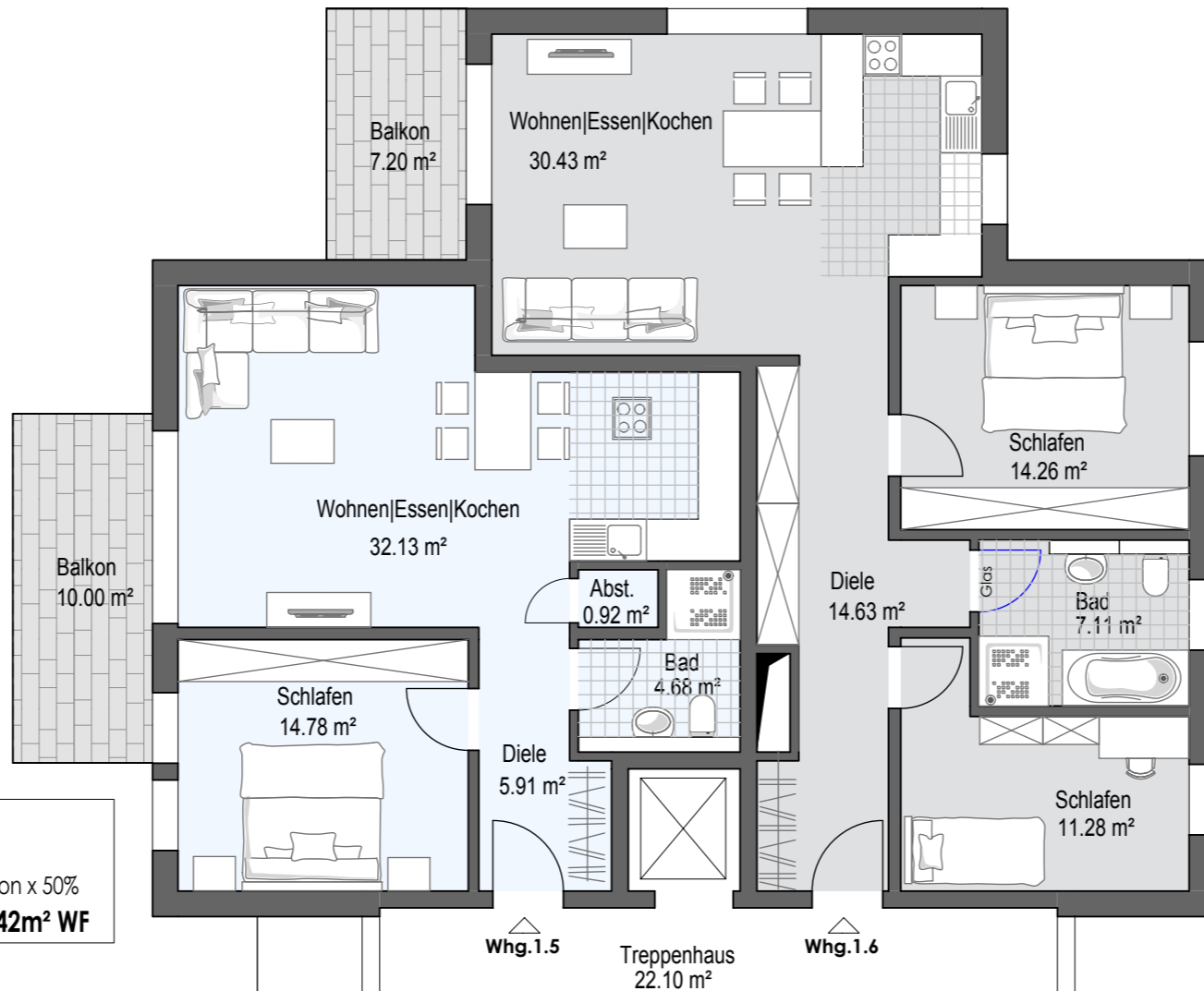
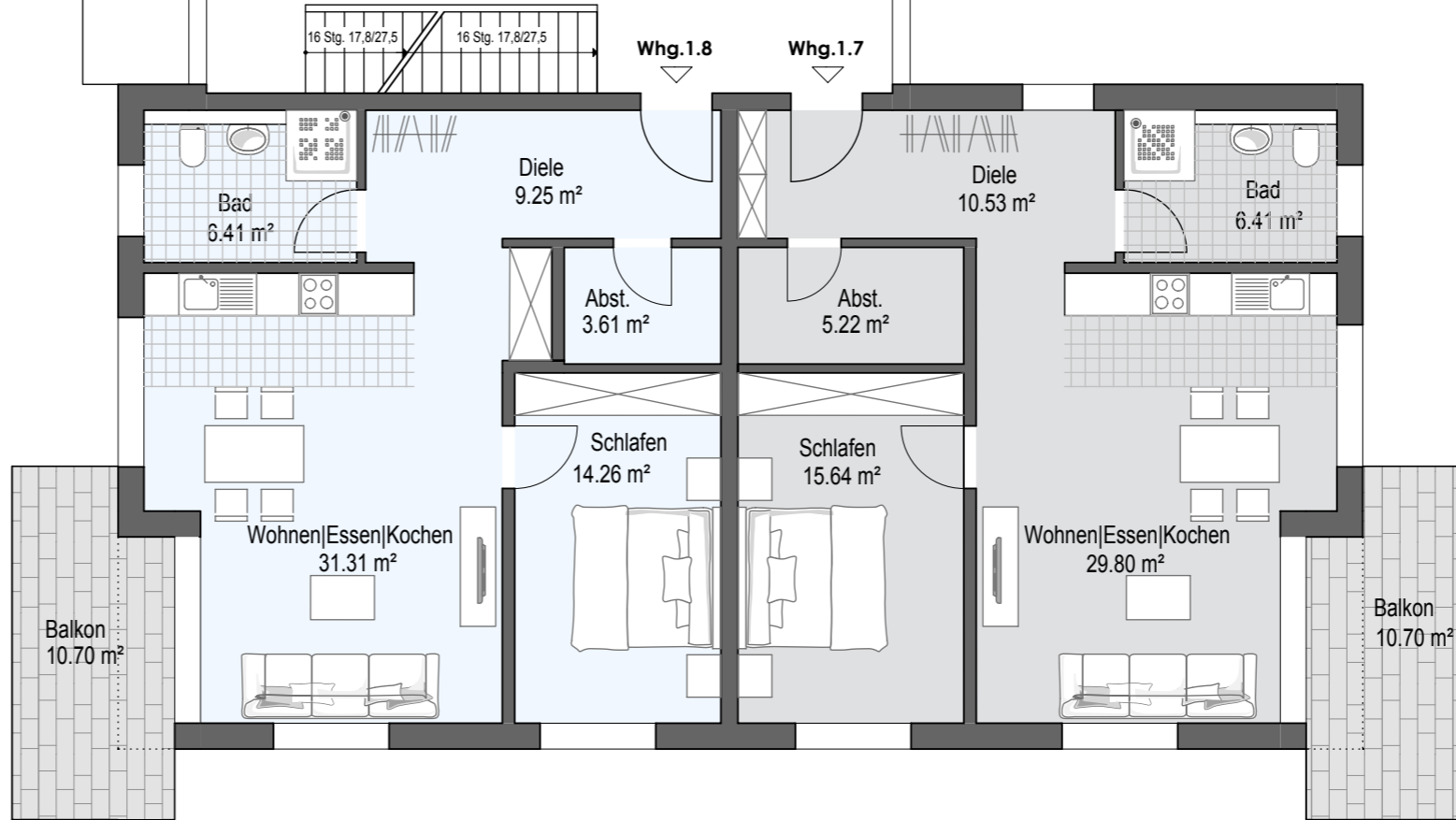


**1.5 | 2-Zi.-Whg.**  
ca. 58,42m<sup>2</sup> WF  
+ ca. 10,00m<sup>2</sup> Balkon x 50%  
**gesamt ca. 63,42m<sup>2</sup> WF**



**1.6 | 3-Zi.-Whg.**  
ca. 77,71m<sup>2</sup> WF  
+ ca. 7,20m<sup>2</sup> Balkon x 50%  
**gesamt ca. 81,31m<sup>2</sup> WF**

**1.8 | 2-Zi.-Whg.**  
ca. 64,84m<sup>2</sup> WF  
+ ca. 10,70m<sup>2</sup> Balkon x 50%  
**gesamt ca. 70,19m<sup>2</sup> WF**



**1.7 | 2-Zi.-Whg.**  
ca. 67,60m<sup>2</sup> WF  
+ ca. 10,7m<sup>2</sup> Balkon x 50%  
**gesamt ca. 72,95m<sup>2</sup> WF**